



EIN# 20-5570858

Math is Collaboration



Dear Zeno Community,

In 2022, the Zeno team explored what math is to the communities we work with and beyond. We talked about how math is opportunity, an ancestral right, and most importantly math is identity. With you, we also learned that math is adventure, math is collaboration, and math is family traditions. The more we explored, the more we celebrated that math truly is everywhere!

Alongside this exploration, your donations, volunteerism, and partnership brought joy, play, and the love of math to 4,594 children across the state. With your support, early learners built positive math identities that will shape the trajectory of their educational journey and life.

Math is too important of a life skill to allow any child to grow up believing they are not good at math. As you peruse this report, please know it is your support and collaboration that make this work possible. On behalf of the children, families, and partners reached, thank you for a successful 2022 programmatic year!

In gratitude,
Maile

Staff + Board



Maile Hadley
Executive Director



Andriana Alexis
Development +
Communications Director



Kate Sedney-Read
Assistant Director
of Operations +
Project Management



Juan Flores
Program Director



Luz Guillén
Development Logistics +
Database Manager



Jermell Witherspoon
Program Manager



Gladys Reyes
Program Manager



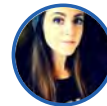
Pablo Cohen
Program Specialist



Felicia Ybarra McCracken
Strategic Partnership
Manager



Anthony Green
Product Sourcing +
Production Manager



Branwyn Flinders
Product + Media Lead
Designer



Jay Goyal
Board Chair
Co-Founder + CEO,
Alongside



Kevin Hu
Vice Chair
Senior Finance Manager, Bill
+ Melinda Gates Foundation



Mike Greene
Treasurer
Director of Product
Marketing, Microsoft



Nikki Freeman
Secretary
Technology Strategist +
Investor, Microsoft



Belinda Smith
Director
Manager, Application
Development, Symetra
Financial



Taj Benford
Director
Small Business Manager,
Seattle Credit Union



Srilakshmi Remala
Director
Program Officer, Bill +
Melinda Gates Foundation



Bill Ketcham
Director
General Manager, Turner
Construction Company



Manuela Crowley
Director
Math Educator + Bread
Baker



Heidi Stolte
Director
Co-Founder, Stolte Family
Foundation



Michael Ong
Director
Program Manager, F5



Chienye Okuwosa
Director
Senior Manager, Microsoft



Carolyn Landel
Director
Texas Education RP3
Network, University of Texas
at Austin

Math is Racial Equity

We all share a common duty to dismantle the racism within our institutions, policies, and beliefs that prevent our society from advancing as an equitable nation. For this reason, Zeno works to ensure that race is not a factor in the acquisition of math skills. All of our work – from program and game design to our staff and board – considers the impact of race, place, language, and culture and how that is directly linked to experiences, attitudes, and mindsets about math. By starting early, making math fun, including families, and working with community-based partners, we can create a world where everyone knows they can do math.

Vision

A racially just world where every child and family is a doer and lover of math.

Mission

Spark joy and inspire a love of math in young children and families through racial equity, family engagement, and play, all centered in the experiences of communities of color.

Equation For Success



Math is Partnership

At Zeno, we believe that math can be the gateway for greater family engagement and improved educational outcomes for young children. We work through partners because they have trusted and long-standing relationships in their community. Their expertise and rapport is a valuable resource for supporting families with early learners.

2022 BY THE NUMBERS

4,594

Families Reached

11

Counties

69

Partners

111

Training + Development
Workshops

165

Partners Sites

52

Hours of Coaching

Math is a doorway to equity.
Zeno helps open that door.
Thanks for all you do for
children and families of color!

42%
Preschools



36%
Family Childcare
Centers

1%
Drop-in
Programs

4%
Home Visiting
Services

Zeno collaborated with Best Starts for Kids, a King County initiative to support happy, healthy, safe and thriving communities – and Horn of Africa Services, a non-profit committed to supporting East African immigrants and refugees attain immediate and long-term adjustment in the Seattle and King County area.



Scan to
Learn More

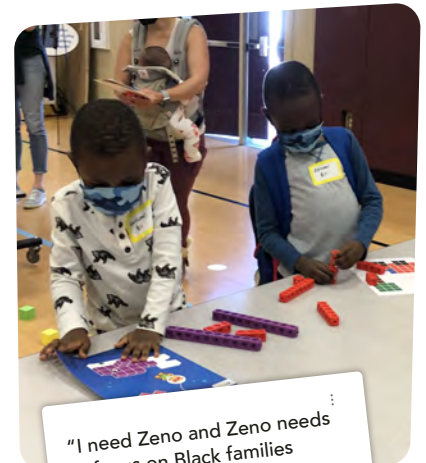
Math is Engagement

In addition to virtual opportunities, after a two year pause Zeno brought back in person Family and Community Engagement Events. In partnership with the Renton Innovation Zone Partnership (RIZ-P), Zeno co-hosted a Community MathFest, relaunched our crowd favorite volunteer game builds during Make A Move 4 Math, and cheered on the gamers at The Gauntlet 2022: Journey with Gamer's Engaged.

2022 BY THE NUMBERS

8
Family Events

4
Community Events



"I need Zeno and Zeno needs to focus on Black families because I can't trust that my son's teacher will believe he can do math - or work as hard to help him when he struggles - because he's Black."



Love

Comment

Share

Grab your family or friends because you're invited to join in on math filled fun with Zeno at our upcoming math events!



Scan to
Learn More



RIZP
Renton Innovation Zone Partnership

Math is Play

Through play children take an active role in their learning, make their own discoveries, and solidify the things they learn through exploration. Game-based learning is valuable as it boosts language skills, sharpens a child's focus, and teach the value of teamwork. We proudly distributed 26,488 Zeno games, including Building Bridges, Are We There Yet, and Good Morning Farm winners of the 2022 Creative Child Magazine Kids Product of the Year Award. Zeno also partnered with MathTalk to bring the augmented reality measurement app, Measure Everything, to Zeno game, Measure Me!



2022 BY THE NUMBERS

5,000,000

Minutes of Play

26,488

Games Delivered



Scan to
Learn More

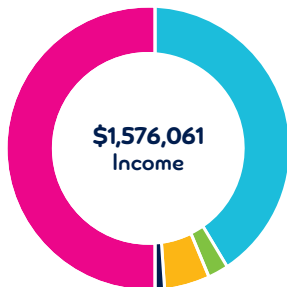
“You know there’s a certain kind of magic when we learn through play. We develop skills and knowledge through the game, but it happens almost on its own. There’s no force, no push, no pull, rather we come to powerful truths about the world around us through our intuition, observations, and experiences. That’s what makes play a powerful tool for learning, and what makes staying together and playing together so important.”

Jay Goyal

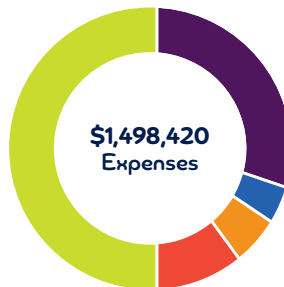
Math is Financials

Your feedback, investments, and collaboration fuel the growing math movement, create positive math experiences, and ultimately shift attitudes about math and learning.

Thank you!



- Contributions + Donations: \$1,305,800
- Government Grants: \$73,644
- Program Revenue: \$163,644
- Special Events Income: \$32,834
- Interest + Dividends: \$1,035



- Personnel: \$904,418
- Professional Services: \$126,349
- Other: \$165,966
- Program: \$300,792
- Cost of Goods Sold: \$896

2022 BY THE NUMBERS

28
Funding Partners

12
Sponsors

16
Infinity Club Members

301
Donors

Thank you to our 16
Infinity Club members!



Our Funders + Sponsors

Amazon
Bamford Foundation
Bill & Melinda Gates
Foundation
Bristlecone Advisors
Cedamere Foundation
Columbia Bank
Discuren Foundation
First Republic Bank

Heising-Simons Foundation
Honest to Goodness Personal
Chef Services
King County Department of
Community and Human
Services
Kitsap Community Foundation
KP Corp
M.J. Murdock Charitable Trust

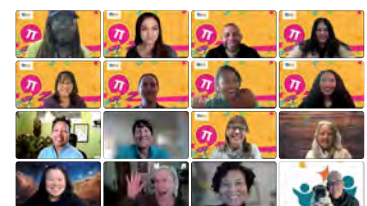
Magic Cabinet Foundation
Medina Foundation
Microsoft Corporation
National Association for
Family, School and Community
Engagement
Norman Raab Foundation
Satya and Rao Remala
Foundation

Stolte Family Foundation
Symetra
The Boeing Company
The Norcliffe Foundation
Treeline Foundation
Tulalip Tribes Charitable Fund
Turner Construction
Unify Consulting



Scan to
Learn More

A very special thank you to these 3 Zeno champions with unique collaboration models that support Zeno and family math missions.



Did you hear? Zeno got a new address!
1404 E Yesler Way, Suite 202D Seattle, WA 98122