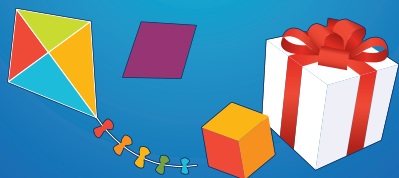


STATION GUIDE

Shape of Life



Want to learn more about playing math?
Visit Zenomath.org

Station Guide Overview

This guide provides information on how to setup and facilitate a small group of 2-7 children or a center station to play the Zeno Game, Find Zeno Bear. At least one adult should be present when playing.

Some of these instructions assume that children can work cooperatively with one another. If that is not developmentally appropriate for the children you are working with, it may be best to have more adults to serve as the children's partners.

Small group play should last 5-10 minutes and should focus on no more than 2 game levels at a time.

Goal

In this game your children will learn how to use and respond to position words (on, in, behind, between, etc.).



Before You Begin Station Guide

Remember that it is important to give children time to freely play with the game materials and explore the game concept of spatial relationships and positional words.

Please ensure that children have had adequate time to explore the game and its concept prior to small groups.





Level 1 Station Guide



Instructions



Blue Shapes

x3



Purple Shapes

x3



3d Shapes

x3



Yellow Mat

x3

Spread the shape blocks on the table or ground. Set out the yellow shape mat.

2 triangles!

Which shapes look the same?



Ask the children to see if they match the shapes to the shapes on the shape mat.

A square has 4 sides!

Tell me about the shapes!



Talk about the shapes that the children find and their attributes (how they look). Continue to play until children have been able to talk about each shape.



Level 2 Station Guide



Instructions



Blue Shapes

x3



Blue Cards

x3

Lay out the blue shape cards and blue punch-out shapes.

2 circles!

Which shapes look the same?



See if the children can match the cards and shapes that look the same.

It looks like a tortilla!

Tell me about the shapes!



Talk about the shapes, describing their attributes (how they look). Continue to play until children have been able to talk about each shape.



Level 3 Station Guide



Instructions



Blue Shapes

x3



Purple Shapes

x3



3d Shapes

x3



Purple Cards

x3



Blue Cards

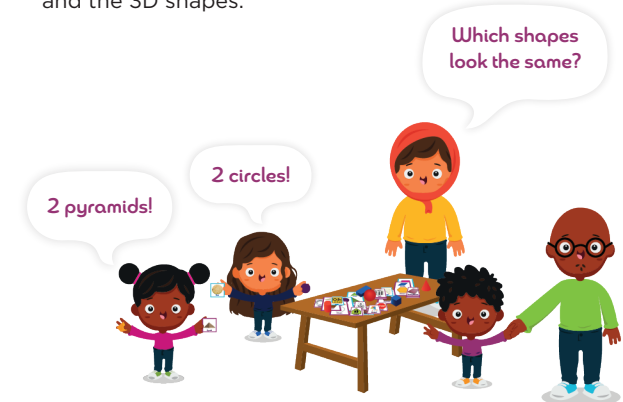
x3

Lay out the blue and purple shape cards, the 2D shapes and the 3D shapes.

2 pyramids!

2 circles!

Which shapes look the same?



See if the children can match the cards and shapes that look the same. Talk about the shapes, describing their attributes (how they look).

Tell me about the shapes!

A pyramid has a square base!



Continue to play until children have been about to talk about each shape. Talk to the children about the difference between 2D and 3D shapes. 2D shapes are flat. 3D shapes can hold something inside of them.